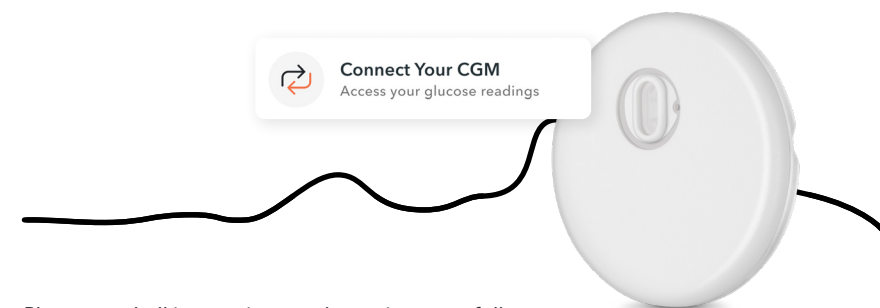


About the FreeStyle Libre 3 Plus Sensor

Your new sensor provides 15 days of continuous glucose monitoring (CGM). Using a thin, flexible filament inserted just under the skin, it's able to measure your glucose every minute.

You'll find essential information on applying and using the sensor in the enclosed "Getting Started Guide."



Please read all instructions and warnings carefully.

Let's connect!

To use your FreeStyle Libre 3 Plus sensor with Omada, you'll need to get data flowing from the Libre app to your Omada account. Here's how:

1 Follow the instructions in the enclosed "Getting Started Guide" to:

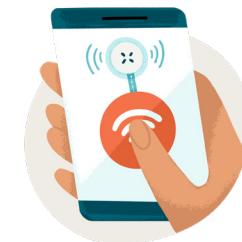
- Download the Libre app²
- Create an account
- Apply the sensor
- Complete your first scan




² Please check the Support section of our website for more information about device compatibility before using the app. Use of the Libre app may require registration with LibreView. Please follow the Libre app instructions on your smartphone.

2 Log into Omada and connect your FreeStyle Libre account.

In the Omada mobile app (download it now, if you haven't already), log in, and select "Connect Your CGM" on your homepage.



 You won't see glucose readings for the first hour while your sensor warms up.

3 Start checking your glucose!

The sensor streams glucose readings automatically when you are within 33 feet of your smartphone. Your Omada Care Team is here to guide your progress!



We're here to help

Have questions?

Go to support.omadahealth.com



Copyright © 2026 Omada Health, Inc. Omada and the Omada logo are U.S. registered trademarks of Omada Health, Inc. The shape of the circle sensor unit, FreeStyle, Libre, and related brand marks are owned by Abbott.

Indications and Important Safety Information

The FreeStyle Libre 3 Plus is a continuous glucose monitoring (CGM) device indicated for individuals with diabetes age 2 and older. Omada only serves individuals age 18 or older. It is intended to replace blood glucose testing for diabetes treatment decisions, unless otherwise indicated. The System detects trends and tracks patterns aiding in the detection of episodes of hyperglycemia and hypoglycemia, facilitating both acute and long-term therapy adjustments. Interpretation of the System readings should be based on the glucose trends and several sequential readings over time. The System is intended for single patient use and requires a prescription. The sensor housing, FreeStyle, Libre, and related brand marks are marks of Abbott and used with permission. For full FreeStyle Libre 3 Plus sensor safety information, please visit <https://www.freestyle.abbott/us-en/safety-information.html>

CONTRAINDICATIONS: Remove the sensor before diathermy treatment.

WARNINGS/LIMITATIONS: Do not ignore symptoms that may be due to low or high blood glucose, hypoglycemic unawareness, or dehydration. Check sensor glucose readings with a blood glucose meter when Check Blood Glucose symbol appears, when symptoms do not match system readings, or when readings are suspected to be inaccurate. Always keep your phone within 33 feet of you, with no obstacles between you. The Sensor itself will not issue alarms; only your Abbott or Omada app will issue glucose alarms! If you're out of the 33 foot range, you may not get alarms. If you want to use the App's optional alarms, keep them turned on. If you adjust the phone ringer volume (iPhone) or Media volume (Android) to silent or use the phone do not disturb setting, keep 'Override Do Not Disturb' setting in the App ON for Low Glucose, High Glucose, and Signal Loss Alarms to ensure you receive audible alarms. The system contains small parts that may be dangerous if swallowed. The FreeStyle Libre 3 Plus is not approved for persons on dialysis or persons who are critically ill. FreeStyle Libre 3 Plus hasn't been evaluated when used with other implanted medical devices, such as pacemakers. Sensor placement is not approved for sites other than the back of the arm and standard precautions for transmission of blood borne pathogens should be taken. The built-in blood glucose meter is not for use on dehydrated, hypotensive, in shock, hyperglycemic-hyperosmolar state, with or without ketosis, neonates, critically-ill patients, or for diagnosis or screening of diabetes. When using FreeStyle Libre app, access to a blood glucose monitoring system is required as the app does not provide one. Review all product information before use or contact Abbott toll-free 855-632-8658 or visit www.FreeStyleLibre.us for detailed indications for use and safety information. For full indications for use and safety information, visit <https://www.freestyle.abbott/us-en/safety-information.html>

Learn more from your CGM with Omada

Continuous glucose monitoring (CGM) provides a more complete view of your glucose. What are your highest points of the day? Are you going out of range overnight? How quickly do different foods raise your glucose? When you use your FreeStyle Libre 3 Plus sensor with Omada, you'll learn all of the above (and more).

Your glucose readings will automatically upload to Omada when you connect your CGM to Omada³—giving you and your Omada Care Team a wealth of data to work with.

3 Alarm notifications will only be received when alarms settings are enabled and turned on and sensor is within 33 feet unobstructed of the reading device.

Smarter glucose tracking

On your home page in the Omada app, select “Glucose” to see your readings and explore your tracking tools.

With your Omada Glucose Tracker, you can:

- See trends and patterns at-a-glance
- Add notes and context to any reading
- Highlight readings to discuss with your care team



Connect Your CGM

Use the FreeStyle Libre 3 Plus CGM with Omada to gain insight into your glucose in real time¹ to spot patterns and trends.

¹ Alarm notifications will only be received when alarms settings are enabled and turned on and sensor is within 33 feet unobstructed of the reading device.